

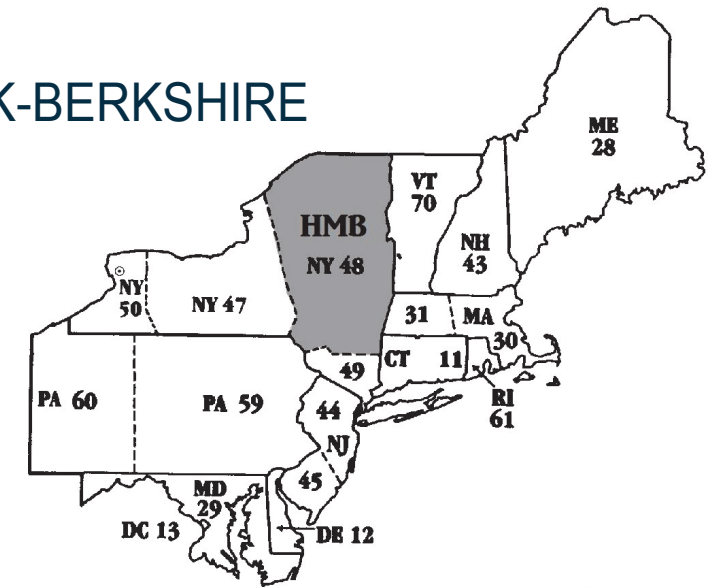
NERAASA 2012  
P.O. Box 6328  
Albany, NY 12206

Northeast  
Regional  
Alcoholics  
Anonymous  
Service  
Assembly

# NERAASA 2012

HUDSON-MOHAWK-BERKSHIRE  
HMB ~ Area 48  
ALBANY, NY

March 2 - 4, 2012



## ***ANONYMITY: Our Spiritual Responsibility in the Digital Age***

NERAASA is for General Service Representatives (GSR's), District Committee Members (DCM's), Area Officers, Area Committee members, District Committee Members, and Intergroup/Central Office Representatives of the Northeast Region to discuss General Service Conference related issues and concerns affecting AA as a whole, as well as pertinent aspects of recovery, unity and service common to the areas of the Northeast region.

**ALL A.A. MEMBERS ARE WELCOME!**

**Panel Presentations / Floor Discussions on Issues Affecting A.A. Today**  
**Northeast Regional Trustee's Report**  
**Saturday Banquet and AA Speaker**  
**Roundtable Sharing Sessions**

**LOCATION: CROWNE PLAZA, ALBANY CITY CENTER**  
40 Lodge Street, Albany, NY 12207

**DEADLINES: Hotel & Event Pre-Registration:**  
Friday, February 17, 2012

### **Contact Information:**

Chair:  
Joan R  
Chair  
[@neraasa2012.org](mailto:@neraasa2012.org)

Treasurer:  
William T  
Treasurer  
[@neraasa2012.org](mailto:@neraasa2012.org)

Registration:  
Tammie E  
tamster1962  
[@roadrunner.com](mailto:@roadrunner.com)

# NERAASA 2012

March 2-4, 2012

## Roundtable Sharing Sessions On:

- Archives/Historians
- Area Chairs & Alternates
- Bridging the Gap
- Cooperation with Professional Community & Public Information
- Corrections
- Delegates & Alternates
- DCMs & Alternates\*
- Grapevine/LaVina & Literature
- GSR's & Alternates\*
- Newsletters
- Secretaries
- Treasurers
- Special Needs
- Treatment
- Website/Information Technology
- Young People

*\*Roundtables meet together in second sessions*

**ONSITE REGISTRATION  
BEGINS 1:00 PM FRIDAY**

- FIRST PANEL: FRIDAY,  
MARCH 2 @ 3:00 PM
- KICK OFF AA MEETING:  
THURSDAY, MARCH 1 @  
8:00 PM

WWW.NERAASA2012.ORG

## Crowne Plaza, Albany City Center

40 Lodge Street, Albany, NY 12207

Amenities: Complimentary high-speed Ruckus Wi-Fi wireless Internet access, a full Health Club, indoor pool, and onsite restaurants. Smoking will be permitted in designated areas only. Smoking rooms will be available. Room rate: \$115 per night plus tax. **\*\*Hotel reservations must be made directly through the hotel.**

Phone reservations (toll free): 877-462-4441

**Online Reservations: [www.cpalbany.com](http://www.cpalbany.com)  
Mention group code DNI for special rate.**

## Travel Information/Directions:

### By Car:

#### From the South:

Take the NYS Thruway (I-87) North to Exit 23. After the toll, follow to I-787 North. Take Exit 4 and follow the signs to Broadway by turning left at the 1st traffic light. Continue on Broadway and turn left on State Street. Continue up State Street to the 2nd traffic light and turn right on Lodge Street. The Crowne Plaza is on the corner of State and Lodge Streets.

#### From the North:

Take the 'Northway' (I-87) South to I-90 East. Follow I-90 East to I-787 South. Use Exit 4B (Clinton Avenue). At the light, turn left onto Broadway. At the 4th traffic light, turn right on State Street. Continue up State Street to the 2nd traffic light and turn right on Lodge Street. The Crowne Plaza is on the corner of State and Lodge Streets.

#### From the West:

Take the NYS Thruway (I-90) East to Exit 24. After the toll, continue to follow signs for I-90 East to I-787 South. Use Exit 4B (Clinton Avenue). At the light, turn left onto Broadway. At the 4th traffic light, turn right on State Street. Continue up State Street to the 2nd traffic light and turn right on Lodge Street. The Crowne Plaza is on the corner of State and Lodge Streets.

#### From the East:

Take I-90 West to I-787 South. Use Exit 4B (Clinton Avenue). At the light, turn left onto Broadway. At the 4th traffic light, turn right on State Street. Continue up State Street to the 2nd traffic light and turn right on Lodge Street. The Crowne Plaza is on the corner of State and Lodge Streets.

By Train: Five miles from Rensselaer

By Air: 15 minutes from Albany

Amtrak Train Station



International Airport (ALB)



Hotel provides free shuttle service from both Airport and Train Station.



## Meal Information & Pricing:

Saturday Breakfast Buffet:	\$ 20.00
Sunday Breakfast Buffet:	\$ 20.00
Saturday Lunch Buffet:	\$ 30.00
Delegates Lunch (Sat):	\$ 30.00
Saturday Night Banquet:	\$ 44.00

# NERAASA 2012 Registration Form

Forms may be copied. Please use one form for each person registering.

Mail-In and On-line Registration will be processed beginning October 1, 2011.

Credit cards will be accepted for online registration only.

**Hotel Registration Deadline: Friday, February 17, 2012**

(Hotel prices are guaranteed until Feb 17 or until room blocks are filled.)

**Event, Banquet & Meal Pre-registration Deadline: Friday, February 17, 2012**

NAME: \_\_\_\_\_ AA AREA#: \_\_\_\_\_ (see front page map)

ADDRESS: \_\_\_\_\_

EMAIL: \_\_\_\_\_ PHONE # (with area code) \_\_\_\_\_

### Service Commitments:

- \_\_\_\_\_ GSR or Alt GSR
- \_\_\_\_\_ DCM or Alt DCM
- \_\_\_\_\_ DCMC or Alt DCMC
- \_\_\_\_\_ District Committee
- \_\_\_\_\_ Central Office or Intergroup
- \_\_\_\_\_ Area Committee
- \_\_\_\_\_ Delegate or Alt Delegate
- \_\_\_\_\_ Panel \_\_\_\_\_
- \_\_\_\_\_ Other \_\_\_\_\_

### Past Delegates:

Area #: \_\_\_\_\_ Panel # \_\_\_\_\_

Conference Committee \_\_\_\_\_

\_\_\_\_\_ I would be interested in moderating a round table session.

\_\_\_\_\_ I have attended NERAASA before:

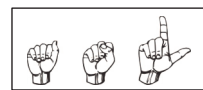
- \_\_\_\_\_ As a presenter
- \_\_\_\_\_ I would like to participate in a panel
- \_\_\_\_\_ I would like to record a round table

\_\_\_\_\_ I have special needs (please specify):  
\_\_\_\_\_  
\_\_\_\_\_

Translation request:

\_\_ASL \_\_Spanish \_\_French \_\_Other \_\_\_\_\_

ASL will be provided if a need presents itself through pre-registration.



**Comments, Suggestions & Requests** (No guarantees, but we will take everything under consideration and do what we can to be accommodating): \_\_\_\_\_  
\_\_\_\_\_  
\_\_\_\_\_

\$ 20.00

- Registration
- \_\_\_\_\_ Saturday Breakfast
- \_\_\_\_\_ Saturday Lunch
- \_\_\_\_\_ Saturday Night Banquet
- \_\_\_\_\_ Beef \_\_\_\_\_ Chicken
- \_\_\_\_\_ Vegetarian
- \_\_\_\_\_ Sunday Breakfast
- \_\_\_\_\_ Delegates Luncheon (current, past & alts only)

\$ \_\_\_\_\_

Total Enclosed

\*\*Please indicate each individual meal desired on registration form. Full payment is required at time of registration.\*\*

**Make check or money order payable to: NERAASA 2012**

(Credit cards will be accepted for online registration only)

Mail completed form with full payment to:

NERAASA 2012  
PO BOX 6328  
Albany, NY 12206

Please complete the form and mail to:

NERAASA 2012  
PO BOX 6328  
ALBANY, NY 12206

Or go to:  
WWW.NERAASA2012.ORG  
beginning  
October 1, 2011